



Unit 4, Chaucer Yard
Clough Road
Sheffield
S14TB

theliveworks.com



LiveWorks is based in the heart of Sheffield's Industrial Quarter

We enjoy excellent road and rail links being situated directly off the ring road and a 10 minute walk from Sheffield Railway Station.

Studio 1 is the primary shooting studio and is ideal for groups of up to 5 people.

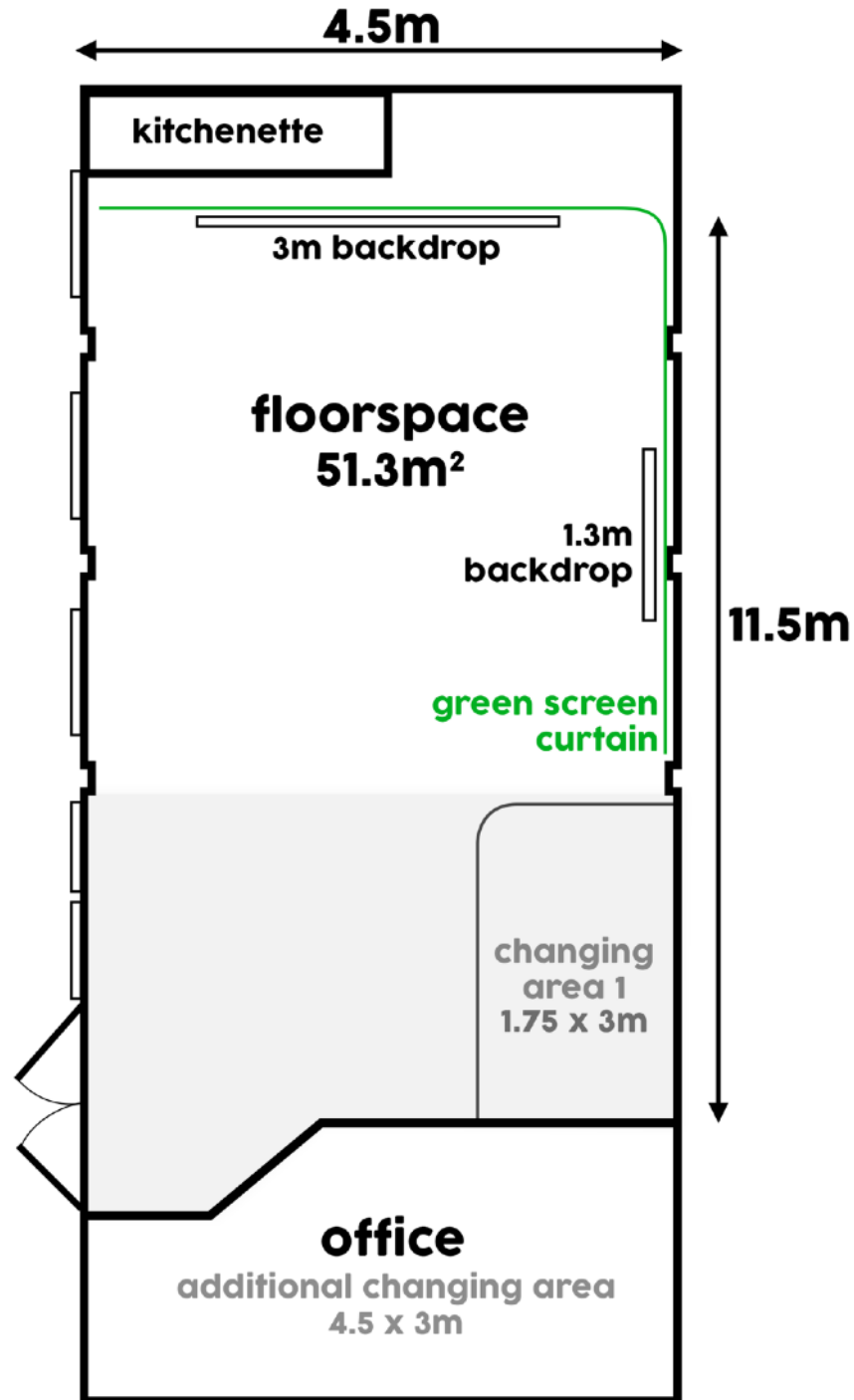
Studio 2 is a supplementary space used for hosting larger groups with a configurable chill-out area and up to 4 dedicated changing/ make-up zones.



Studio 1
Ceilings are 3.5m High



changing area 2
2m x 2m





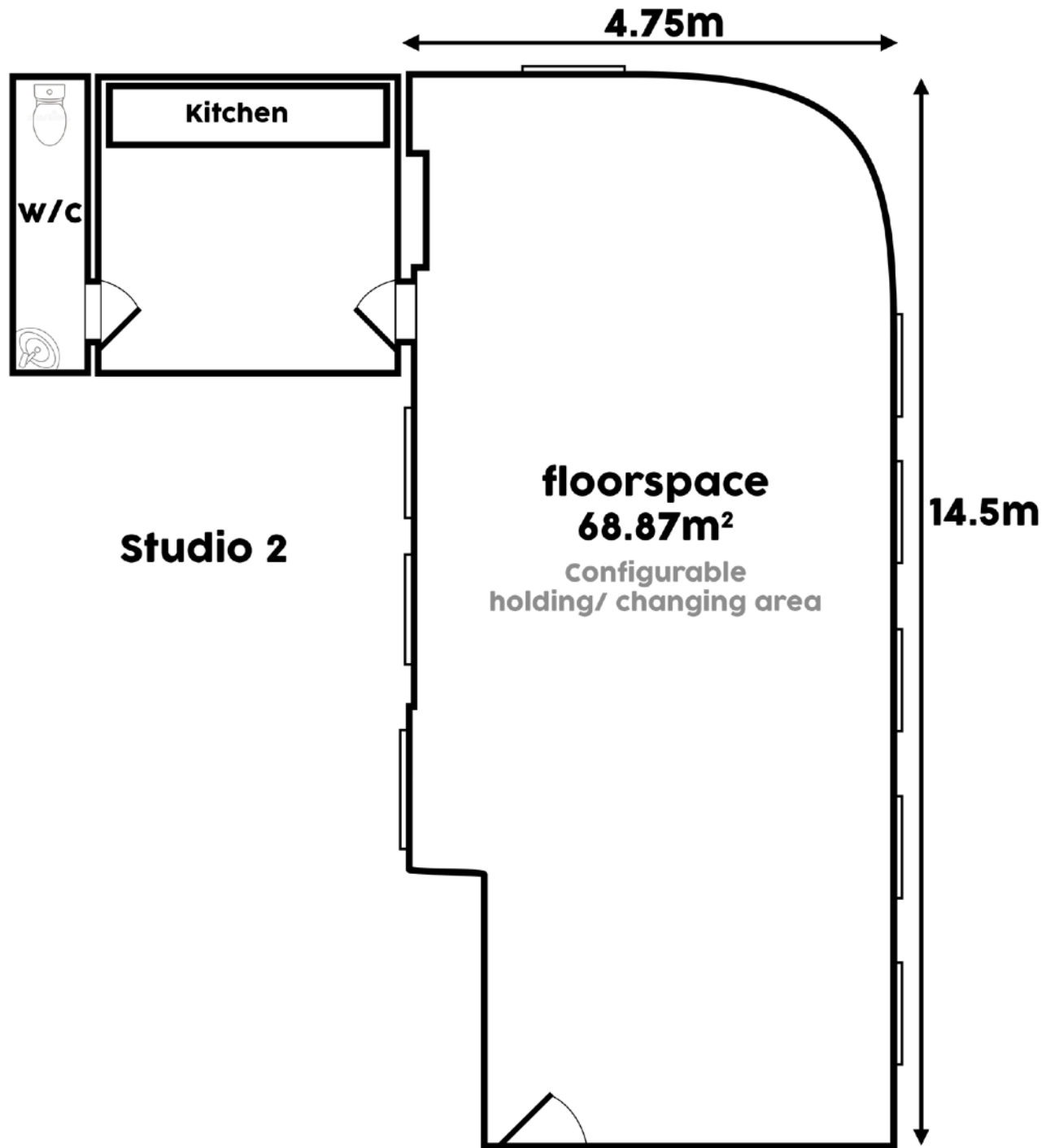




—CHAUCER YARD—

50 CLOUGH ROAD







Studio 2. Configurable either as a supplementary shooting studio or as a chill-out, dressing and changing area



Studio 1

Studio 1 features a 6m green screen which can be positioned along the length or width of the studio. We also have a large selection of 3m backdrop rolls and a large clean white brick wall which runs the length of the shooting area.

A variety of equipment is included:

2 x Bowens 500w Flash Head & Trigger

1 x Aperture 300d mkII

2 x Aperture 120d mkII

2 x Colorspike LED Batons

2 x Neewer LED panel w/ temperature adjustment

3 x Neewer 530 RGB LED

3 x cstands, variety of standard lighting stands

Variety of Lighting modification incl. 90 - 120cm soft-boxes w/ grids + Beauty dish
etc...

10 x 3m coloured backdrops

2 x 1.5m coloured backdrops

2 x Steel Girder Beam Clamps - for hanging fixtures/ aerial performance
equipment.

Travel

Sheffield
Railway Station

St. Marys
Church



Bramall Lane FC



Travel Times:

Car: 15-20 minutes from M1 J36
EMR: 2:30hr from St. Pancras

On-street parking around Chaucer Yard.
(Some private parking in St. Marys
Church by prior agreement)



4 min



9 min



11 min



4 min



Accommodation

[View Map](#)

We recommend:

[Budget: Ibis:](#) A short 2 minute walk from LiveWorks. Parking is via 'the Moor' 7 minutes walk from the hotel.

[Premier Inn:](#) A short 2 minute walk from LiveWorks. Breakfast option. Has basement Carpark direct off the ring road.

[Mercure Hotel & Spa:](#) Based in Sheffield's Winter Gardens, includes a trendy restaurant, champagne bar and a gym plus meeting space. There's also a spa with an indoor pool, a sauna and a steam room. 15 minute walk from LiveWorks, Parking via concierge service or Q park on Charles Street. S1 2NJ

[Executive: Sheffield Quays Hotel.](#) Casual cocktail bar & heated indoor pool, includes sauna, a gym and terrace. Breakfast included. Parking at the Hotel.



Hospitality

Teas, coffees and snacks are on the house, and the courtyard contains a cafe selling a small range of sandwiches and baked goods, but for something more substantial we recommend:

www.birdhouseteacompany.com - 8 minute walk. Great cafe. Breakfasts, salads and pizza in the summer - great tea too!

yggecafes.com/thirty-two - 5 minute walk - Healthy Danish food, Pastas, salads, platters for groups.

johnstkitchen.co.uk - 3 minute walk - Wraps, Burgers and home-made cakes.

www.twistedburger.uk - 6 minute walk. Based in Triple Point Brewery. Burgers, Fries and great beer brewed on-site.

thecabin-sheffield.co.uk - 10 minute walk. Canadian waffles, bagels and coffee.





Thank you. If you have any questions
please don't hesitate to get in touch.

Luke